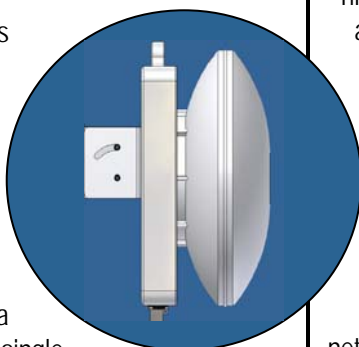




Data Sheet

The SnapLink product family of IP Radios is easy to install and turn up for data, VoIP and video transport. It uses standard 802.3 Ethernet protocol interfaces to provide 54 Mbps (Over The Air) at moderate distances and 11 Mbps (OTA) at longer distances of clear digital IP transport. Because SnapLink Radios operate in unlicensed and licensed millimeter bands (20 – 40 GHz), they provide Interference Free service.

SnapLink Radios are a "Snap" to install with its single unit design that combines the radio and antenna in a rugged mechanical package. A single cable provides both data and power. The units automatically acquire each other as soon as power is applied. Because SnapLink Radios uses a flexible, low cost 2" to 4" pole - mounting system, installation is a "Snap".



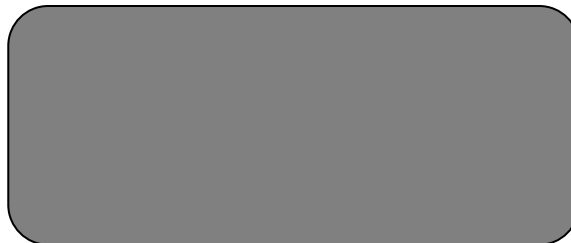
SnapLink Radios are available in the US at the licensed free or licensed 24 GHz bands. They are also available in the licensed 38/39 GHz bands. These bands give interference free service for high reliability and signal assurance. Additionally,

SnapLink Radios will adjust data rates in severe weather conditions to keep the link and the service alive.

SnapLink Radios are ideal for IP backhaul, internet network extensions and local by-pass. This cost effective radio is made for corporate, private and government network operators interested in clear wireless data.

Features

- Cost Effective IP Radio
- 54 Mbps moderate range – 11 Mbps up to 5 miles
- Operates at Interference Free bands (Licensed or Unlicensed)
- International Bands Available
- A "Snap" to : Install : Turn Up : Maintain
- "Plug and Play" Ethernet Interfaces



Specifications subject to change without notice

SnapLink c/o STS 823 Hollywood Blvd., Crownsville Maryland 21032

Phone: 410-923-8622 • Fax: 410-923-8623 • email: sward@shieldtechsystems.com

Item	Specification	Comments
Air Interface		
Frequency *	24 GHz licensed and unlicensed and 28/38 GHz licensed	Other international frequencies available
Modulation	DQPSK	
Spread Spectrum	OFDM / Direct Sequence Spread Spectrum	
Transmit Power	5 dBm nominal into antenna	
Point to point		
Antenna Type	12" reflector antenna	
Antenna Gain	34.5 dBm typical at millimeter wave	12" antenna @ 24 GHz
Antenna Beam Width	2.6° typical, 3dB beam width millimeter wave	12" antenna @ 24 GHz
Network Interface		
Network Topology	Pt. to Pt.	
Over Air Data Rate	54 to 11 Mbps @ error rate of 10^{-6} or better	Distance dependent
Effective Data Rate	27 to 5 Mbps @ error rate of 10^{-6} or better	Distance dependent
Cable	Category 5	
Connector	RJ-45 female modular jack	Data and DC power
Interface	10/100BaseT via AC power adapter	
Range		
Range millimeter wave	8 km (5 miles) in clear air at 11 Mbps 1-3 km (.5- 3 miles) in clear air at 54 Mbps	12" antenna
Physical & Power (POE)		
Weight	2 kg typical	Including the mount
Mounting	Pipe or wall mount	
Grounding	8 mm bolt on the transceiver for grounding	
DC voltage	+20V _{DC} to +56V _{DC} into the receiver	
Power Consumption	10 Watts nominal	
Dimensions	304mm (12") x 304 mm (12") x 51mm (2")	Excluding antenna
Environmental		
Sealing	All Weather enclosure	
Operating Temperature	-35° to + 55° C	
Specifications at +25° C unless otherwise specified		

* SnapLink can be made in any frequency band between 20-40 GHz

Specifications subject to change without notice

SnapLink c/o STS 823 Hollywood Blvd., Crownsville Maryland 21032

Phone: 410-923-8622 • Fax: 410-923-8623 • email: sward@shieldtechsystems.com